



Advanced Center
for Electrical and Electronic Engineering



UNIVERSIDAD TECNICA
FEDERICO SANTA MARIA

MOTIVATION



CHILEAN ECONOMY

Strongly based on the exploitation of natural resources



CHILEAN TECHNOLOGY INDUSTRY

Few success stories (not widespread)



MISSING LINK

Between university and industry

OUR MISSION

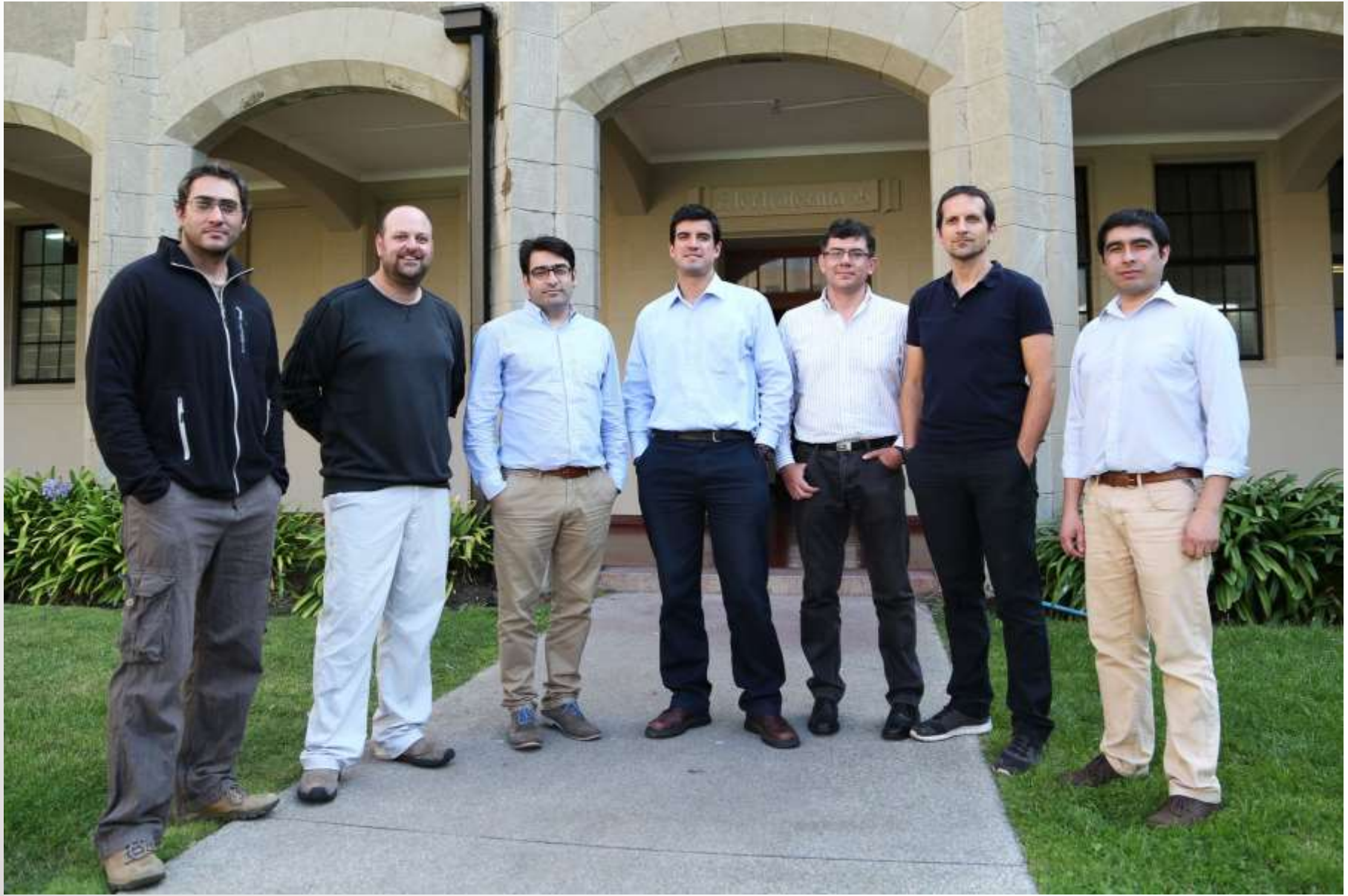


To contribute to the technological development and competitiveness of the Chilean economy by achieving excellence in **RESEARCH**, forming advanced human resources, and fostering **INNOVATION** and **TECHNOLOGY TRANSFER** in areas of societal and industrial impact through the field of **ELECTRICAL AND ELECTRONICS** engineering

WHO WE ARE



PRINCIPAL INVESTIGATORS



ROBOTICS



Dr. Fernando Auat Cheein
ROBOTICS



Miguel Torres-Torriti, Ph.D
ROBOTICS
(Ph.D. Electrical
Engineering (Systems and
Control), McGill University)



Pablo Prieto, Ph.D
PRODUCT DESIGN
(Doctor of
Philosophy (PhD),
Brunel University,
England)



Luis Pérez
MECHANICS
(Doctor in
Mechanical
Engineering,
UTFSM, Chile)



Ronny Vallejos, Ph.D
STATISTICIAN
(Ph. D. in Statistics,
University of Maryland
Baltimore County, USA)

ENERGY



Christian Rojas
POWER ELECTRONICS
(Ph.D. in Electronics
Engineering, UTFSM,
Chile)



Samir Kouro
RENEWABLE ENERGY
(Dr. Universidad Técnica
Federico Santa María,
Chile)



José Rodríguez
POWER ELECTRONICS
(Dr. Erlangen University,
Germany)

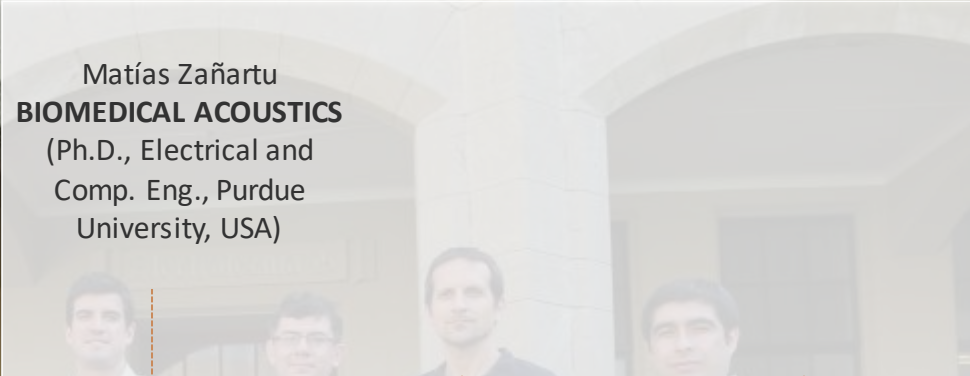


Roberto Cardenas
MACHINE CONTROL
(Ph.D. in Electrical and
Electronic Engineering,
University of
Nottingham)



Marcelo Pérez
HVDC SYSTEMS
(Dr. Universidad de
Concepción, Chile)

BIOMEDICAL SYSTEMS



Matías Zañartu
BIOMEDICAL ACOUSTICS
(Ph.D., Electrical and
Comp. Eng., Purdue
University, USA)



María José Escobar
**COMPUTATIONAL
NEUROSCIENCE**
(Ph.D. in Sciences,
Université de Nice-Sophia
Antipolis, France)



Alejandro Weinstein
**BIOMEDICAL SIGNAL
PROCESSING**
(Ph.D, Electrical Eng,
Colorado School of
Mines, USA)



Patricio Orio
**BIOMEDICAL SIGNAL
PROCESSING**
(Dr. en Ciencias, U. de
Chile)



Wael El-Deredy
BRAIN DYNAMICS
(PhD Neurocomputing,
Institute of Neurology,
University College
London, UK)

CONTROL AND AUTOMATION

Juan I. Yuz,
SAMPLED-DATA MODELS
(Ph.D., U. of Newcastle,
Australia)



Eduardo Cerpa
CONTROL OF PDES
(Ph.D, Université
Paris-Sud, France)



Marcos Orchard
**PROGNOSIS AND
HEALTH
MANAGEMENT**
(Ph.D. Georgia
Tech, USA)



Alejandro Rojas
**NETWORKED
CONTROL
SYSTEMS**
(Ph.D, U. of
Newcastle,
Australia)



Juan C. Agüero,
**SYSTEM
IDENTIFICATION ,**
(Ph.D, U. of
Newcastle,
Australia)



Francisco Vargas,
**NETWORKED
CONTROL
SYSTEMS** (Ph.D,
UTFSM, Chile)



Rodrigo Carvajal,
**COMMUNICATION
CHANNEL
MODELING,** (Ph.D,
U. of Newcastle,
Australia)

ELECTRICAL SYSTEMS

Pablo Lezana
POWER ELECTRONICS
(D. Ingeniería Electrónica,
Universidad Técnica
Federico Santa María,
Chile)



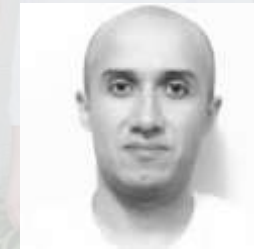
Esteban Gil
**POWER SYSTEMS
AND RENEWABLE
ENERGY**
(Dr. Iowa State
University, USA)



Victor Hinojosa
**OPERATION AND
PLANIFICATION OF
ELECTRIC SUPPLY
SYSTEMS**
(Dr. Universidad Nacional
de San Juan, Argentina)



Francisco Muñoz
**ECONOMIC PLANNING
OF POWER SYSTEMS**
(Ph.D. Energy Economics
and Operations Research,
The Johns Hopkins
University, USA)



Gonzalo Carvajal
**SPECIALIZED
COMPUTING AND
EMBEDDED SYSTEMS**
(Ph.D in Electrical
Engineering, Universidad
de Concepcion, Chile)

SIGNAL PROCESSING AND COMMUNICATIONS

Milan S. Derpich
**SIGNAL PROCESSING
NETWORKED CONTROL**
(Dr. Univ. Of Newcastle,
Australia)



Mauricio Araya
**DISTRIBUTED DATA
ACQUISITION**
(PhD en Informática,
INRIA-Université de
Lorraine, Francia)

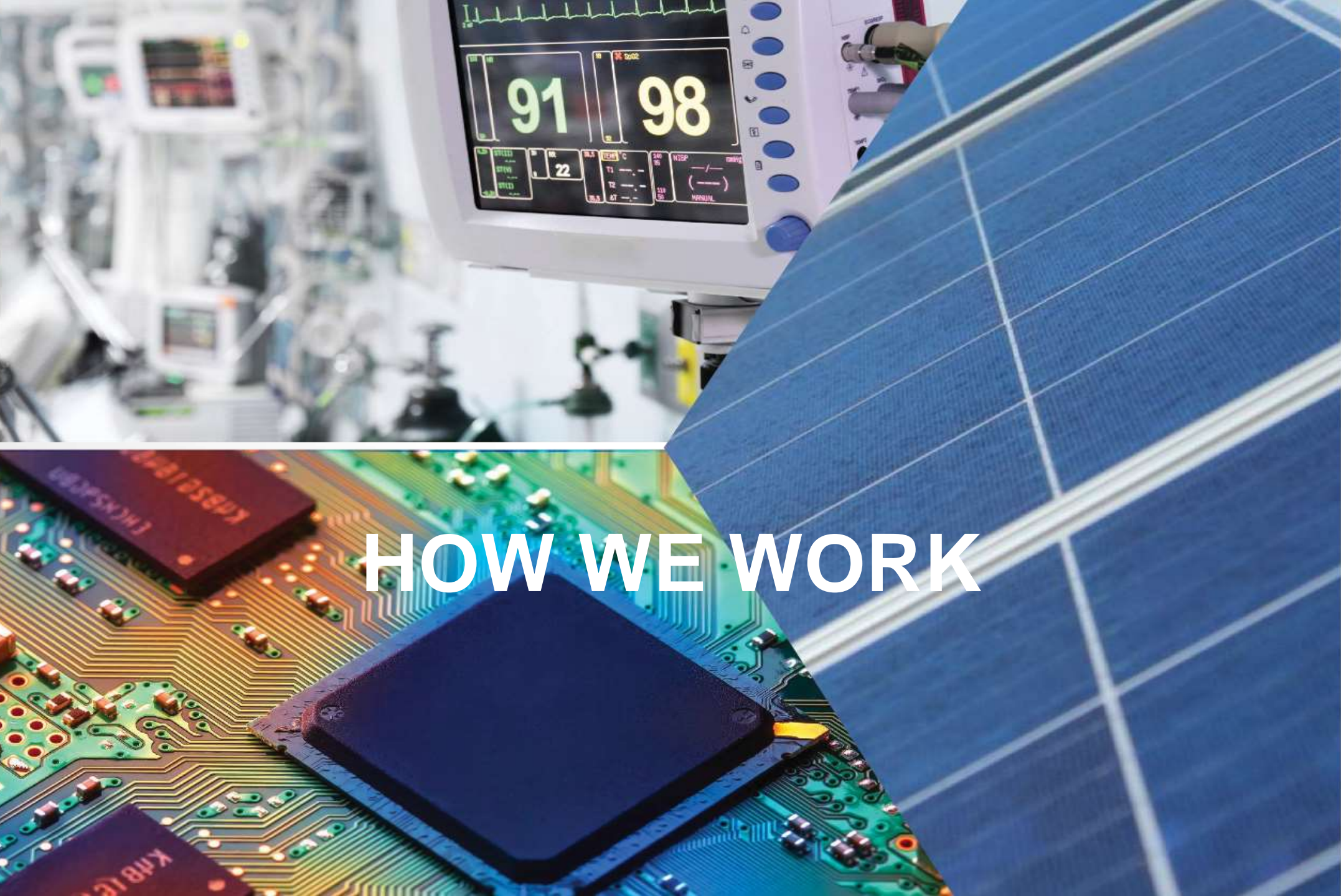


Jorge F. Silva
**SIGNAL PROCESSING,
STATISTICAL INFERENCE**
(Dr. Univ. South
California, EEUU)



Luciano Ahumada
SIGNAL PROCESSING,
(Dr. Ing. Eléctrica y
Electrónica , UTFSM)





HOW WE WORK



**Health
technology**

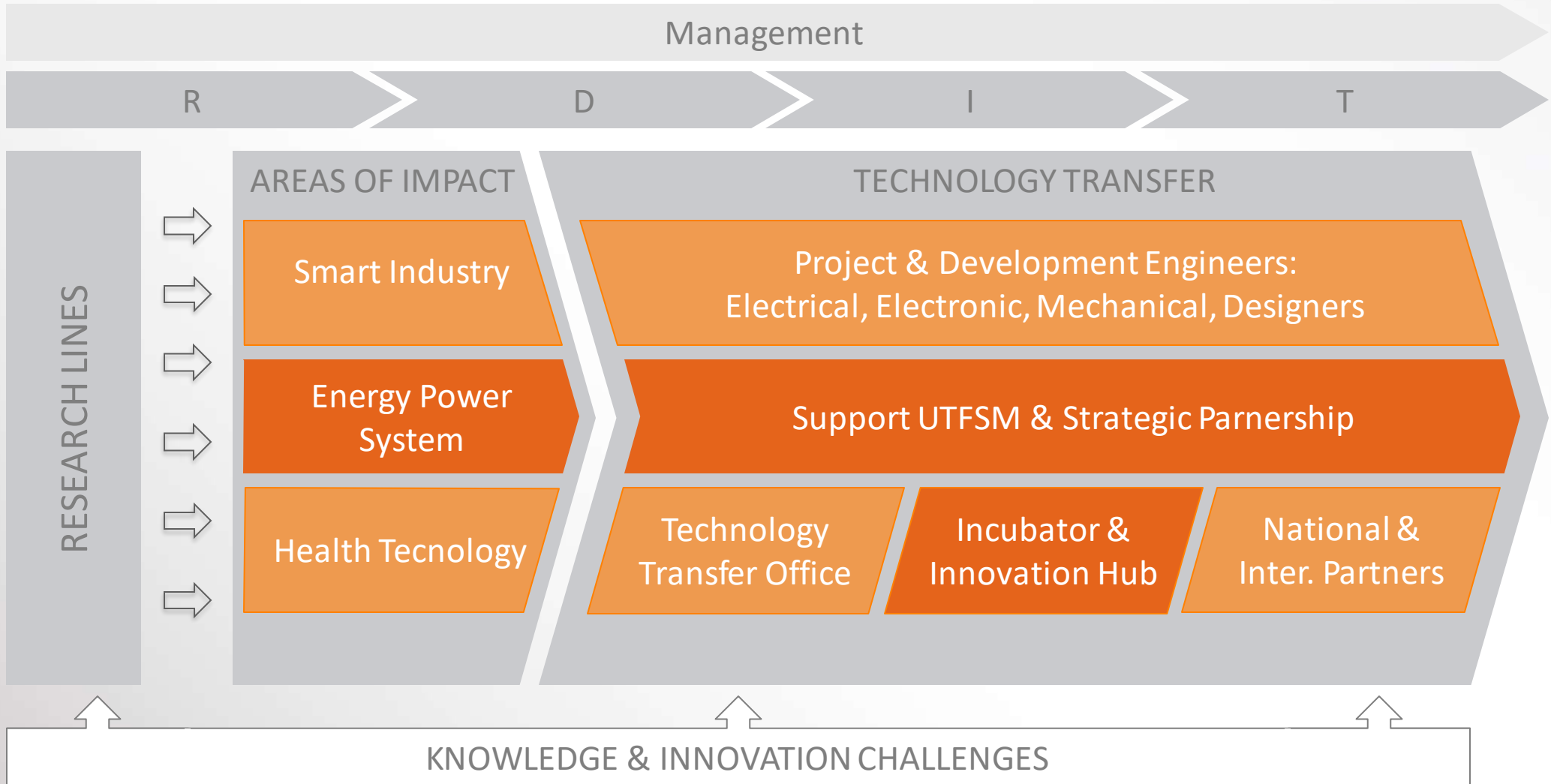
**Energy and
Power systems**

**Areas
of Impact**

**Smart
industry**

HOW WE WORK

Research, Development, Innovation and Transfer

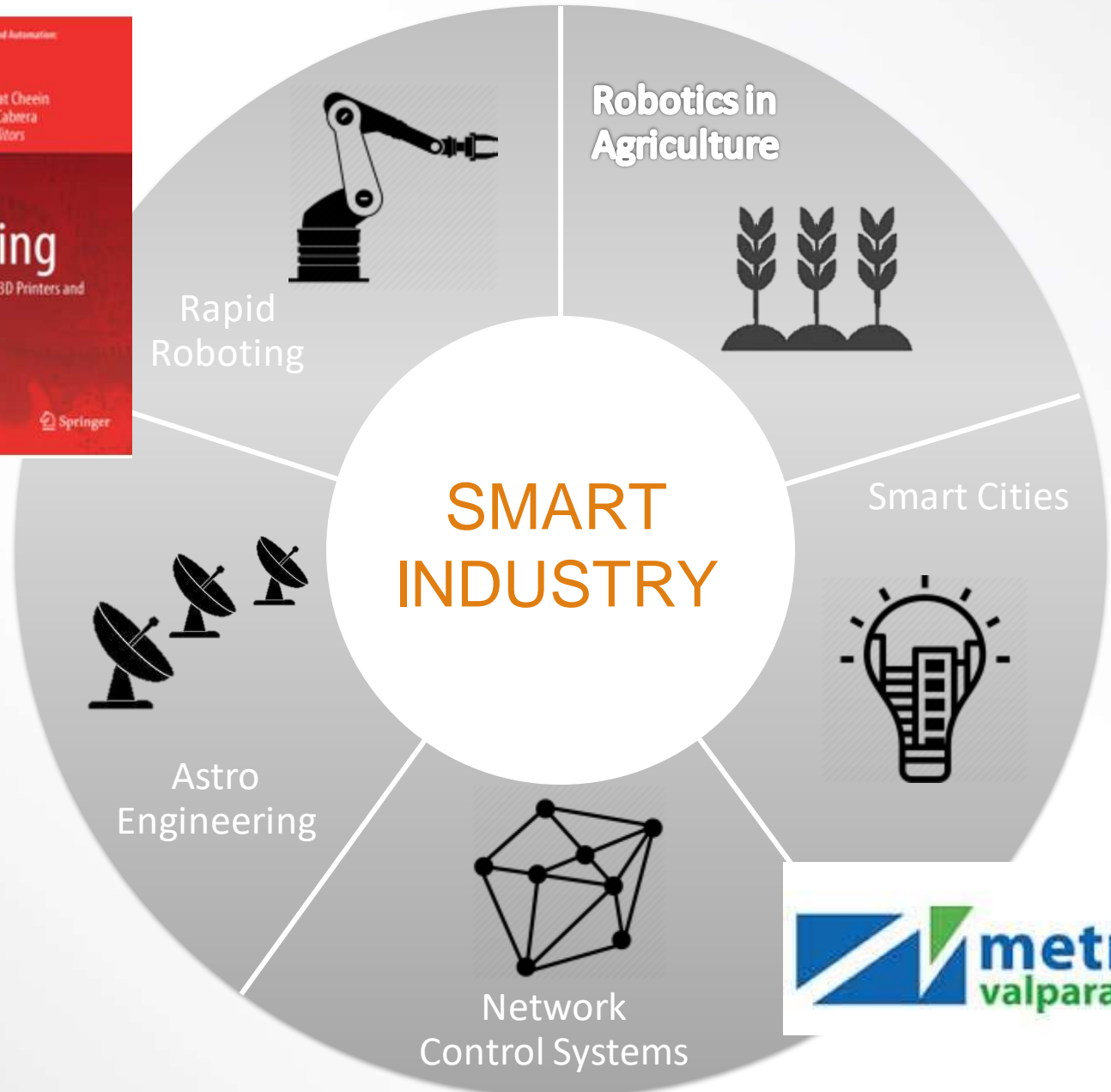
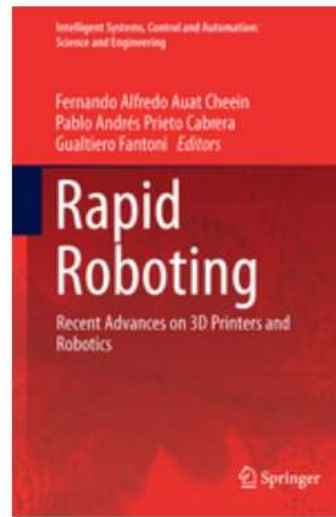


IMPACT AREAS:

SMART INDUSTRY

RESEARCH: The Rapid
Roboting concept
(Springer, 2017)

PROJECT: Metro
Valparaiso line
simulator to optimize
train timetable based
on passengers arrival.

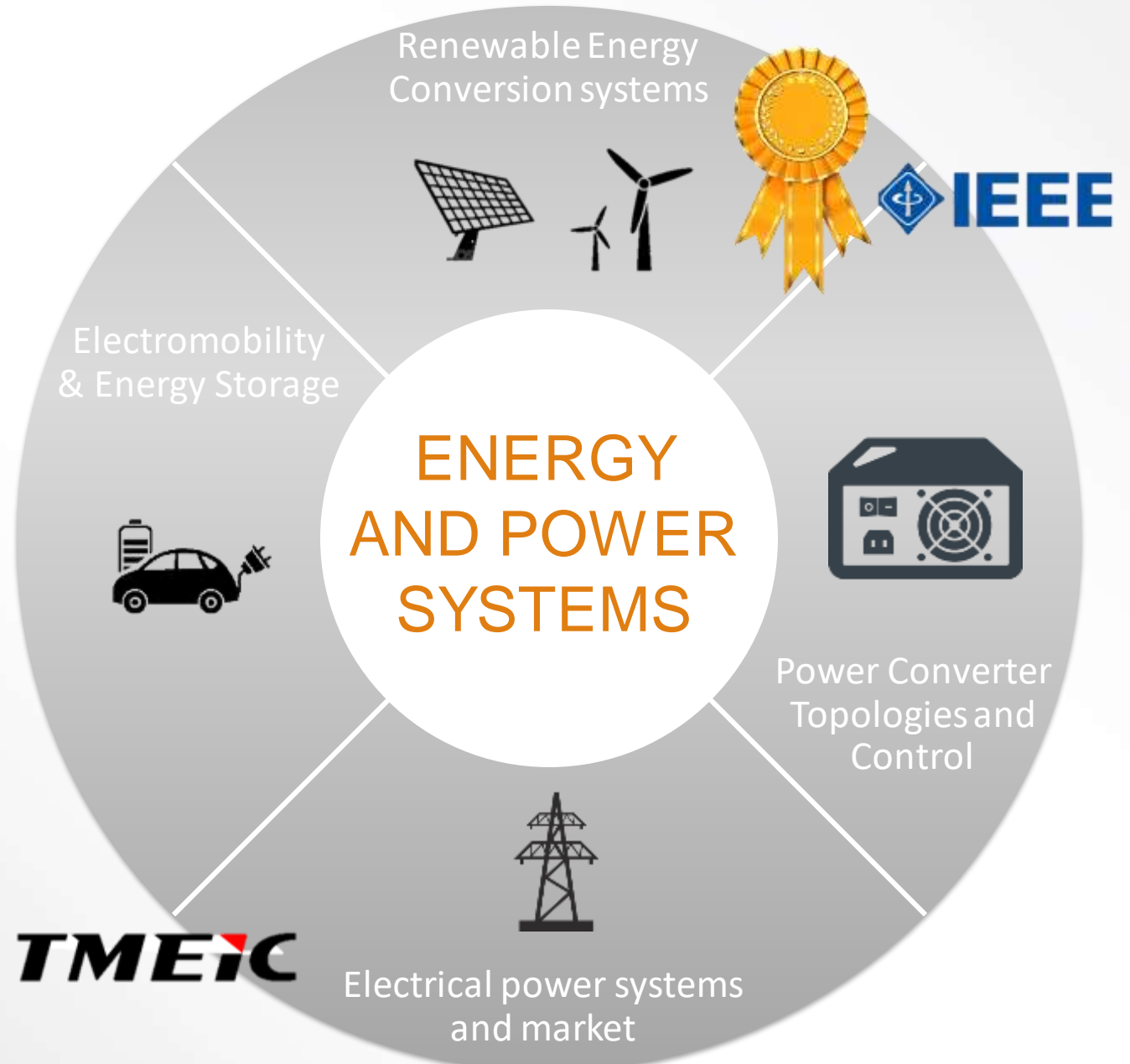


IMPACT AREAS:

ENERGY AND POWER SYSTEMS

RESEARCH: 2015 IEEE IES David Irwin Award for “multilevel converter technology and application to renewable energy conversion systems”.

PROJECT: TMEIC. Analysis, modeling and simulation of Samurai Photovoltaic inverter and its interaction to the utility grid, in the Chilean power system



IMPACT AREAS:

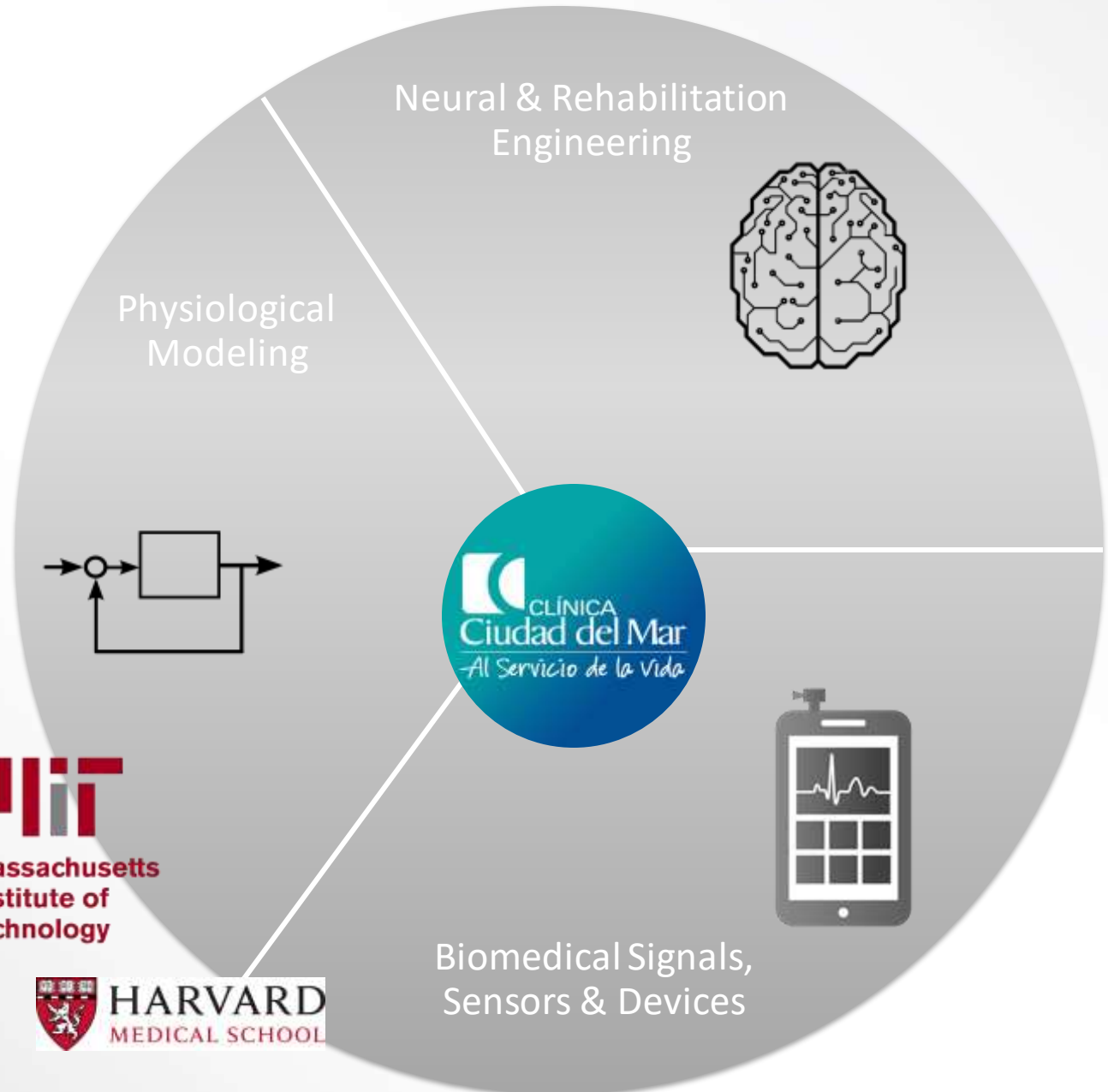
HEALTH TECHNOLOGY

PROJECT: CCdM.

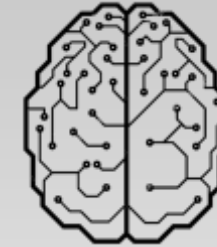
Biomedical sensing to detect obstructive sleep apnea in children through recordings of neck surface acceleration.

RESEARCH: NIH R01, R21, and P50 research proposals.

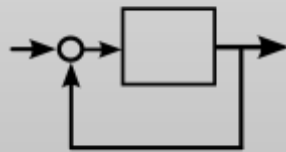
R21 recently funded.
P50 highly ranked, resubmitted in 2016.



Neural & Rehabilitation
Engineering



Physiological
Modeling



CLÍNICA
Ciudad del Mar
- Al Servicio de la Vida



Biomedical Signals,
Sensors & Devices

CAPABILITIES FOR DEVELOPMENT



Human Resources

- **31 researchers** / 6 Research Lines
- **5 Development engineers and technicians** / electric and y electronic.
- **>80 undergraduates and postgraduates students** eventually involved in projects with industry

Infrastructure

- **12 laboratories** availables
- **1 development laboratory** for academics an industrial projects.
- **First class instrumentation y equipment**

Background

- **Industrial:** 10 currently projects and >20 finished.
- **20 research projects**
- **Design an prototyping** for innovation projects.
- **Advisory and training** in electric and electronic





+30 Active cooperation partners

GLOBAL NETWORK



WORLD-CLASS RESEARCH FOR WORLD CLASS CHALLENGES



Advanced Center
for Electrical and Electronic Engineering

Av. España 1680, Of. U400 / Valparaíso, Chile

www.ac3e.cl